

SYLTON®



Includes:
Universal iPad Visor
Stickers
Allen key

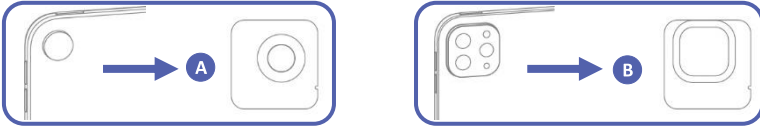
OBSERV®

Universal iPad Visor

Quick set-up Manual

Observ Universal iPad visor

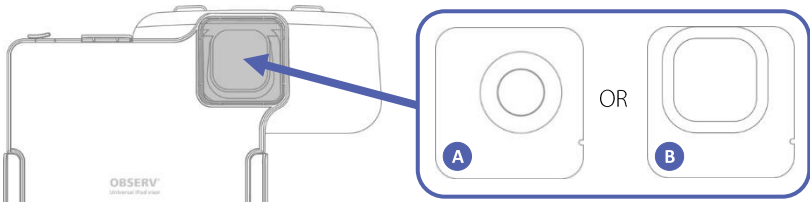
Before using, check if the iPad is compatible with the Observ.
Check the type of camera on the iPad and use the matching sticker.



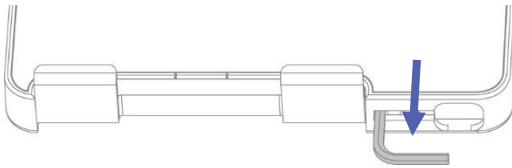
In case of doubt, please contact your distributor.

1 Set-up

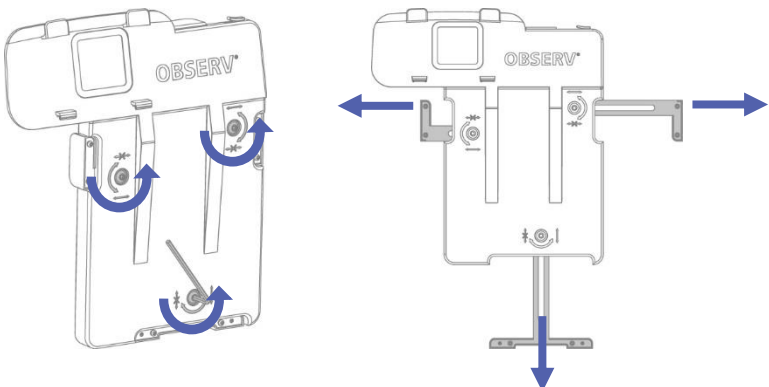
1. Choose the correct sticker (A or B). Remove the backing of the sticker before attaching it to the Universal iPad Visor. Pay attention to match the notch in the sticker with the rib on the Universal iPad Visor.



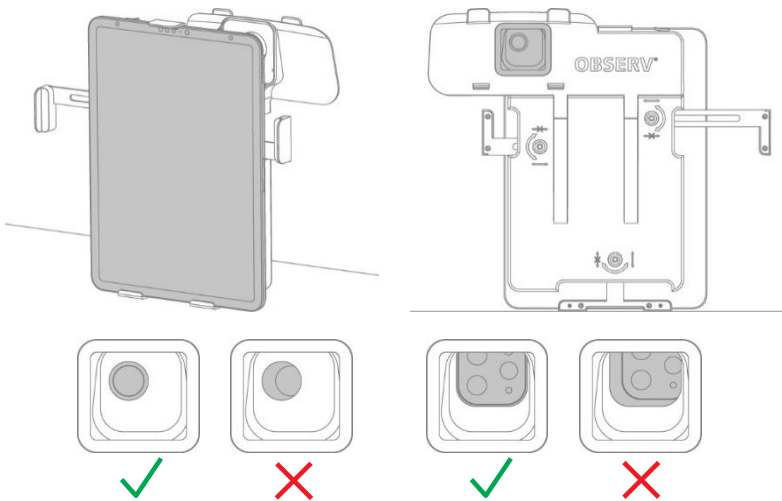
2. An allen key is positioned at the bottom of the Universal iPad Visor. Remove it.



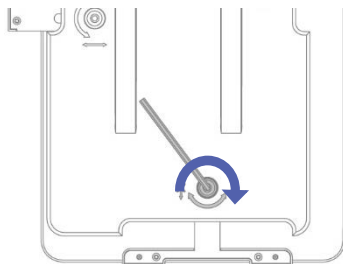
3. Use the allen key to untighten the 3 screws on the back of the visor. And slide out the arms.



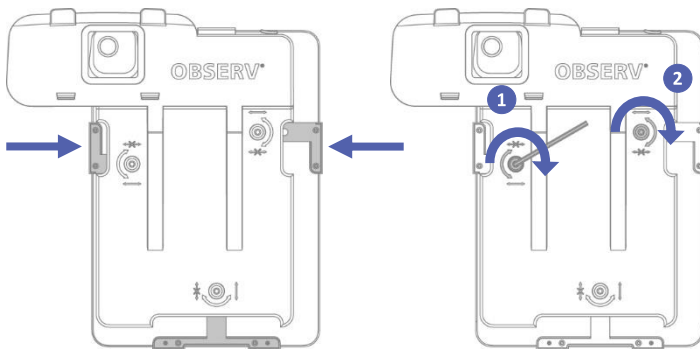
4. Hold the Universal iPad Visor in an upstanding position on a flat surface. Place the iPad inside the visor. Check the back and make sure the camera of the iPad is centered with the opening of the sticker.



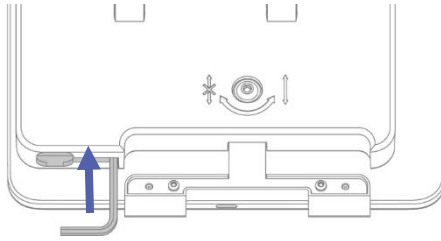
5. Maintain the position while tightening the bottom screw.



6. Slide the side arms towards the iPad. Maintain the centered position of the camera while fastening the screws in the correct order.

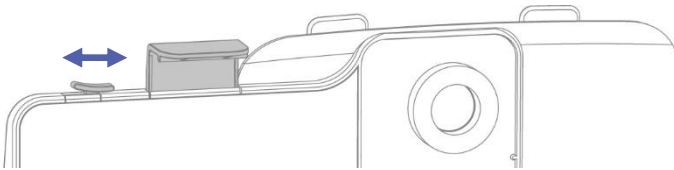


7. Place the allen key back into the bottom of the Universal iPad Visor.



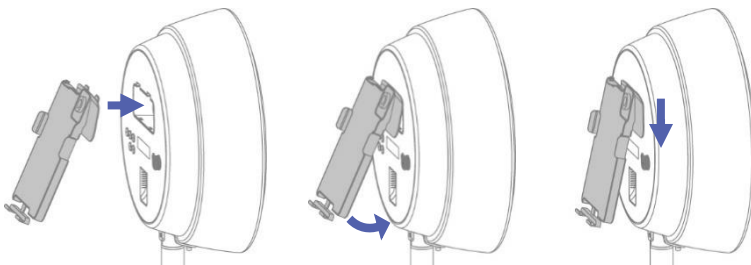
2 Lock

The lock on top of the Universal iPad Visor can be used to keep the top slider in a fixed position.



3 Attaching the Universal iPad Visor to the Observ

1. Move the Universal iPad Visor towards the back of the Observ.
2. Mount the Universal iPad Visor in the top openings of the Observ and tilt the Universal iPad Visor to attach the bottom hooks to the Observ.
3. Slide down the Universal iPad Visor firmly until you hear a click.



The Universal iPad Visor is now ready to use.